

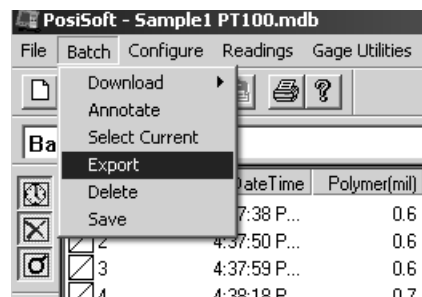
# Exporting Readings from PosiSoft Software for Windows

PosiSoft is free with Memory versions of our **PosiTector 6000** and **PosiTector 100** Series coating thickness gages. It is an option for our **PosiTector 200**, **DPM**, and **UTG**.

PosiSoft® Software is an ideal solution for those who wish to download measurements to a P.C. for printing or archiving. Readings can be saved in user specified delimited text files for easy import into Access, Excel, Lotus and other software programs as shown below.

## Exporting Readings from PosiSoft

1. Batch information can be exported to other software program files either separately or all together. To export a batch(es), select Export in the PosiSoft Batch menu.



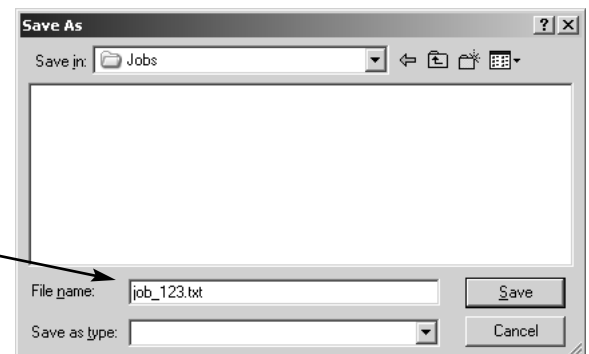
2. In the window that appears, highlight the Batch(es) you want to transfer. Select the appropriate boxes to have the readings, summary, annotations, or, all of this information transferred.



You may enter a character in the "Export Separator" box to separate the readings once the information is transferred to the target file. Remember this for later use in Step 4 (Importing Readings from PosiSoft to Microsoft Excel).

Note: When using the European number format, you may want to select an export separator other than a comma so as not to confuse it with the comma that represents the decimal point.

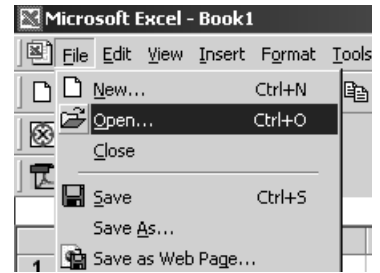
3. Press "Export" and PosiSoft will pop up a standard "Save As.." window. Type the filename with an extension relative to the software to which the information will be imported (for example **\*\*\*.txt** for a standard text file, **\*\*\*.doc** for a Word application, **\*\*\*.xls** for a spreadsheet application such as Excel, etc.)



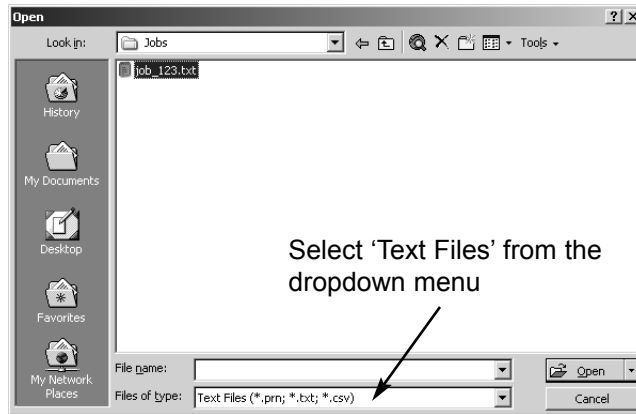
Standard text (.txt) provides the greatest flexibility/compatibility and is used for this example.

# Importing Readings from PosiSoft to Microsoft Excel & Access

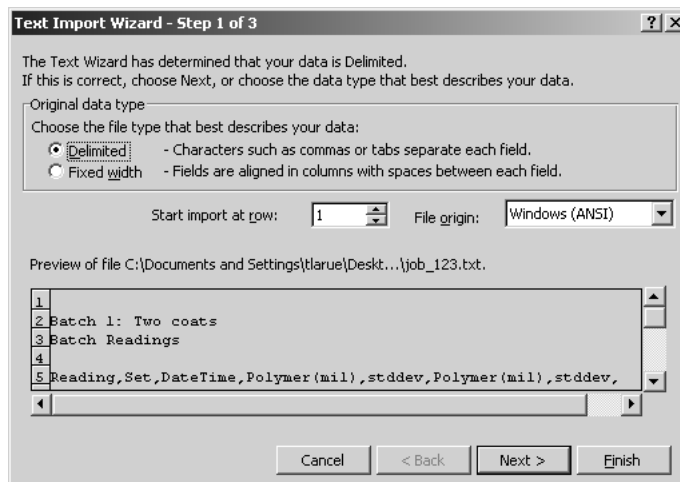
1. Open MS Excel or MS Access and select Open from the File menu.



2. Browse to the location where you saved the exported (.txt) file. Select the exported file and choose 'Text Files' from the 'Files of Type' dropdown box (as shown below).



3. The Text Import Wizard will appear. Choose the appropriate options as shown below and select next.



4. Check the appropriate delimiter (Export Separator) as defined during PosiSoft Export and select 'Finish'. Your readings should now appear in individual cells (MS Excel) or fields/tables (MS Access)

